

BONASTENT® M-Intraductal

Specifications for Benign Biliary and Pancreatic Strictures

Indication	Order No.	STENT					DELIVERY DEVICE	
		Diameter of Both Ends (mm)	Diameter of Mid-Portion (mm)	Mid-Portion Length (mm)	Total Length (mm)	Lasso Length (mm)	Diameter (Fr)	Usable Length (mm)
Benign Biliary/ Pancreatic Stricture	BBI-080318-B	8	6	10	30	70	8	1800
	BBI-080418-B			15	40			
	BBI-080518-B			20	50			
	BBI-080618-B			25	60			
	BBI-080718-B			30	70			
	BBI-100318-B	10	8	10	30			
	BBI-100418-B			15	40			
	BBI-100518-B			20	50			
	BBI-100618-B			25	60			
	BBI-100718-B			30	70			
Benign Biliary Stricture Following Liver Transplantation	BBI-080318-L	8	6	10	30	100	8	1800
	BBI-080418-L			15	40			
	BBI-080518-L			20	50			
	BBI-080618-L			25	60			
	BBI-080718-L			30	70			
	BBI-100318-L	10	8	10	30			
	BBI-100418-L			15	40			
	BBI-100518-L			20	50			
	BBI-100618-L			25	60			
	BBI-100718-L			30	70			

BONASTENT® M-Intraductal 12

Specifications for Malignant Biliary Strictures

Indication	Order No.	STENT					DELIVERY DEVICE	
		Diameter of Both Ends (mm)	Diameter of Mid-Portion (mm)	Mid-Portion Length (mm)	Total Length (mm)	Lasso Length (mm)	Diameter (Fr)	Usable Length (mm)
Malignant Biliary Stricture	BBI-120318-M	12	8	10	30	70	8	1800
	BBI-120418-M			15	40			
	BBI-120518-M			20	50			
	BBI-120618-M			25	60			
	BBI-120718-M			30	70			

Reference) Moon JH, et al. Gastrointestinal Endoscopy 2012;75:1080



Standard Sci-Tech Inc.

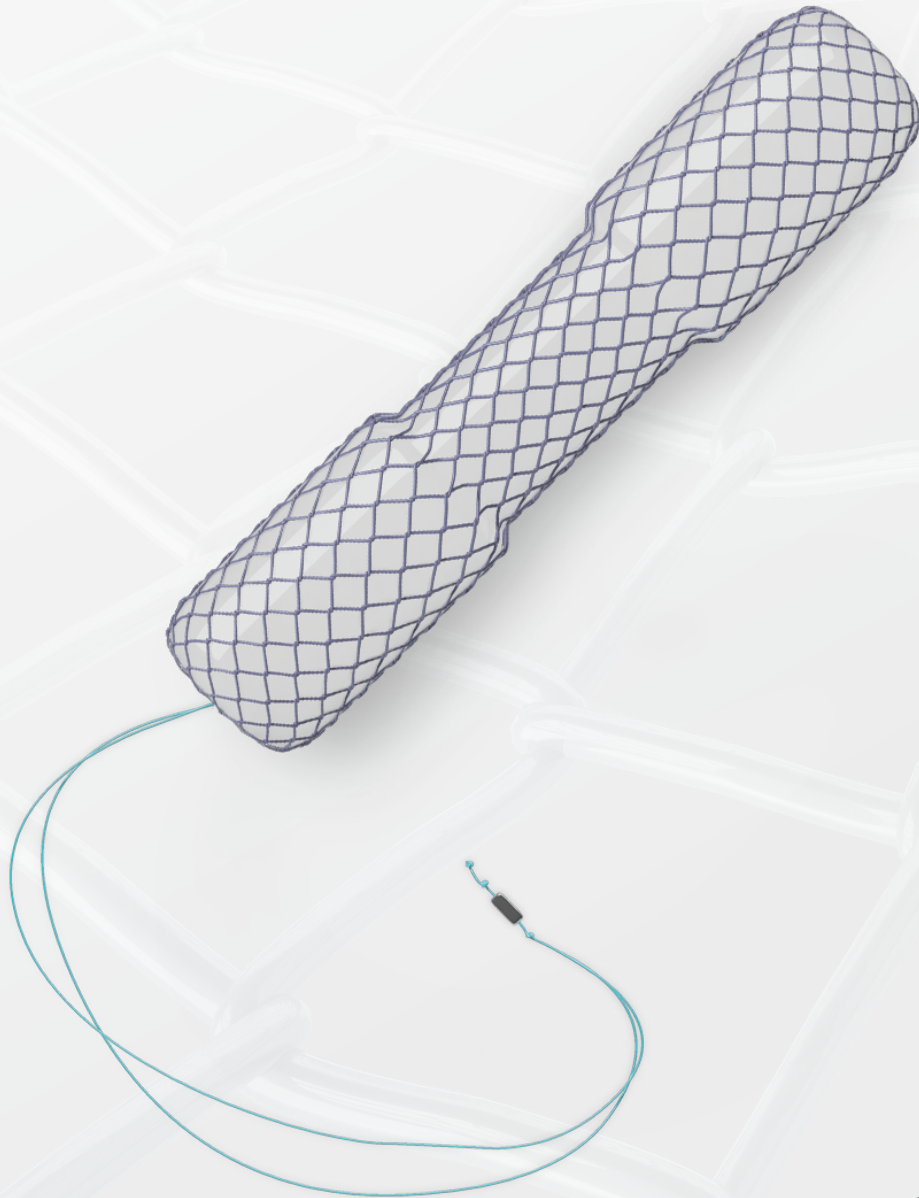
3F Sewoon Bldg, 46 Wangsan-ro
Dongdaemun-gu, Seoul, Korea 130-823
Tel +82-2-922-3605
Fax +82-2-922-3606
www.standard4u.com

BONASTENT®

M-Intraductal

Fully Covered Removable Intraductal Metallic Stent

Innovative Stent Design

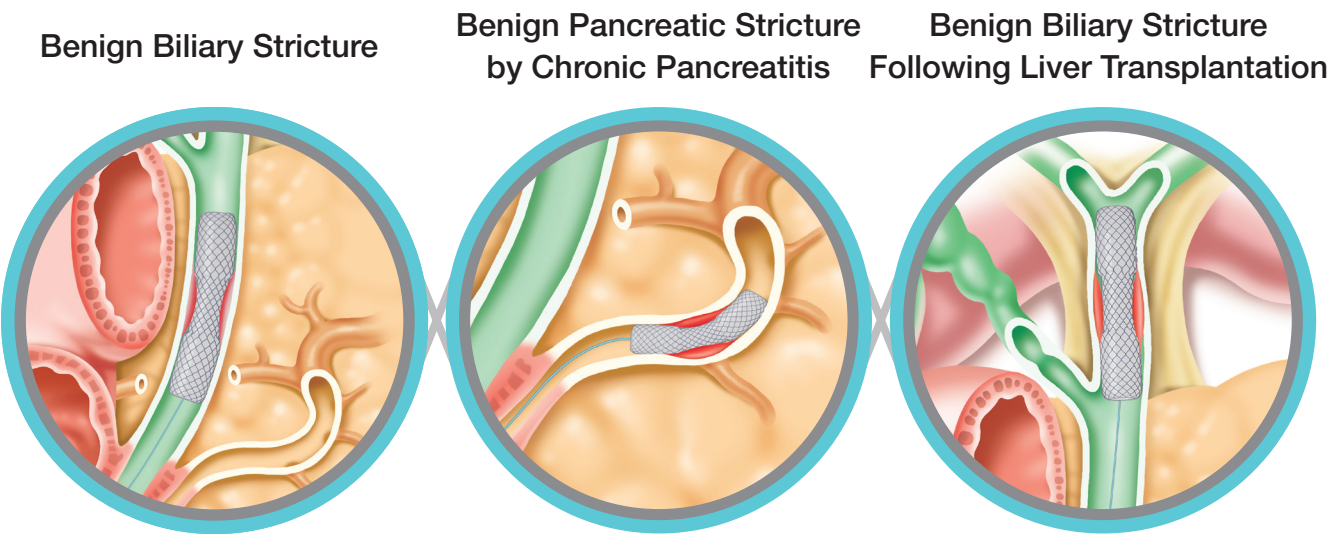


BONASTENT® M-Intraductal

For Benign Biliary and Pancreatic Strictures

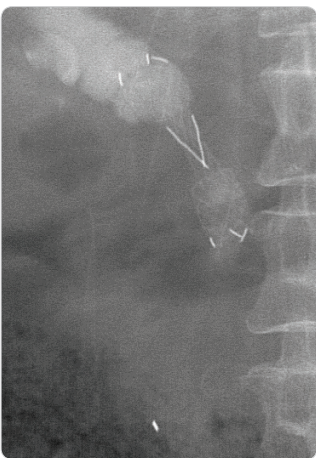
Features

- Ideal length for intraductal stenting above the papilla
- Minimizes the adverse stenting effect to non-strictered duct
- Prevents duodenal reflux
- Convex margin at both ends to prevent De Novo stricture by tissue hyperplasia
- Cross wire structure and middle waist formation to prevent early migration
- Fully covered silicone membrane to prevent tissue in-growth and adhesion
- Innovative long-lasso type for easy stent removal

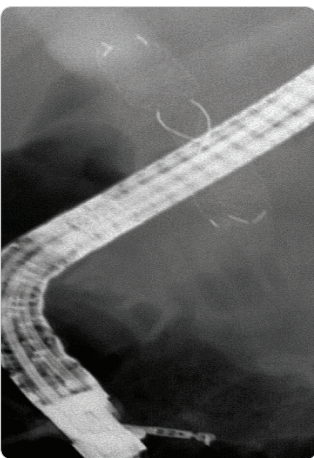


Easy Removal of BONASTENT® M-Intraductal and M-Intraductal 12

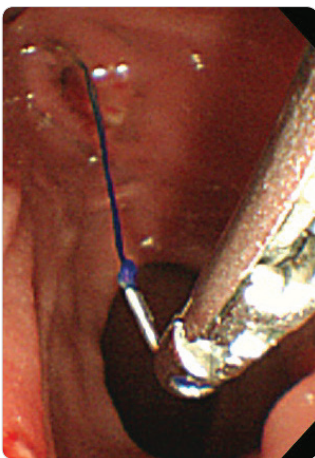
STEP 01



STEP 02



STEP 03



- Pull the lasso attached to remove the stent using forceps without sharp edged teeth through the working channel of a scope.

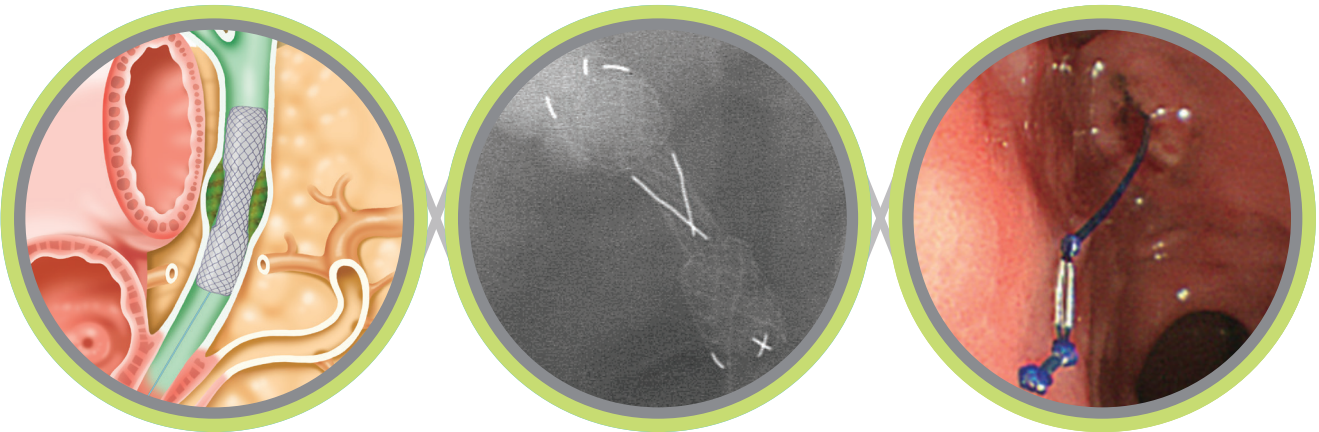
BONASTENT® M-Intraductal 12

For Malignant Biliary Strictures

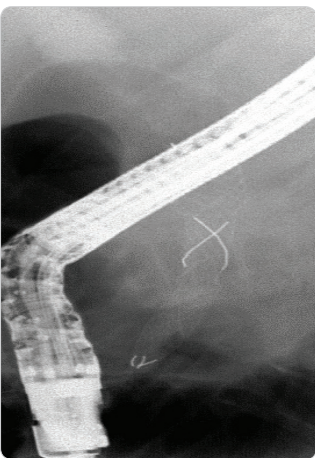
Features

- Novel removable metal stent for pre-operative endoscopic drainage for malignant biliary stricture
- Minimizes the metal stent-induced perioperative complications
- No interference to further surgical procedures and adjuvant anti-cancer therapy
- 12 mm diameter to increase the patency and to decrease stent migration
- Prevents duodenal reflux
- Convex margin at both ends to prevent De Novo stricture by tissue hyperplasia
- Cross wire structure and middle waist formation to prevent early migration
- Fully covered silicone membrane to prevent tissue in-growth and adhesion
- Innovative long-lasso type for easy stent removal

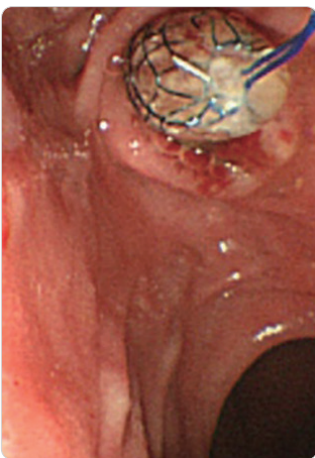
Malignant Biliary Stricture



STEP 04



STEP 05



STEP 06

